



**Office of the Monroe County Surveyor**  
**Trohn Enright-Randolph**

---

Health Services Building  
119 West 7<sup>th</sup> Street  
Bloomington, IN 47404  
Phone: (812) 349-2570

Dear User,

The following images were obtained in 2017 by the Office of the Monroe County Surveyor from the State Imaging and Microfilm Laboratory at the Indiana State Archives. The field notes and plats for Lawrence County are stored on microfilm Reel 1903 at the Indiana State Archives. Each page provided by the State Imaging and Microfilm Laboratory is approximately 18MB. Our office combined the pages by Township & Range and reduced the resulting pdfs. This process may have caused some degradation in quality. We will provide unreduced images of specific pages if required. Please contact us at 812-349-2570 or at [SurveyorsOffice@co.monroe.in.us](mailto:SurveyorsOffice@co.monroe.in.us) to request a higher quality image of any specific page.

The pdfs are bookmarked with the original page numbers as assigned by the State Imaging and Microfilm Laboratory.

Be prepared to provide the county name, reel number, and the required page numbers when requesting full sized images.

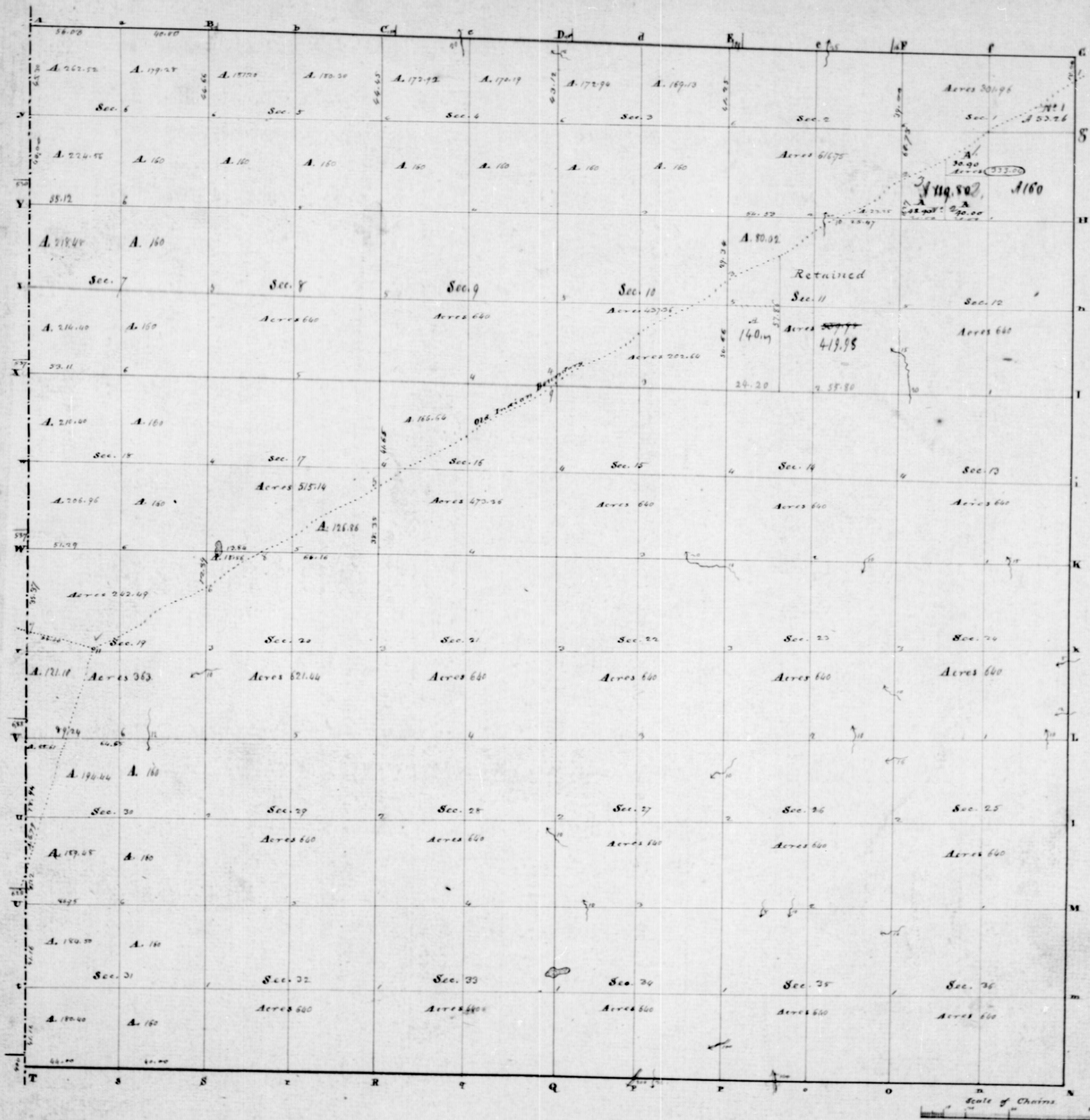
If you would like a DVD of an entire county, please provide us with one DVD per county along with a self-addressed, stamped envelope.

Trohn Enright-Randolph  
Monroe County Surveyor

T3N

RIE





Township No. III North of the Baseline, Range No. I East of the 2<sup>nd</sup> Meridian. Surveyed by Arthur Henric 1806 & 1811.

Quality of the land on the interior section lines



North Line continued

- 40.00 Set half mile post from which a Hickory 5 Inchs dia. bears N 60 W 6 Lks & a B. Oak 20 Inchs dia. bears South 2 Links
- 58.50 Brook 150 Links wide Course West -
- 79.50 W. Oak 20 Inchs dia.
- 80.00 Set post corner of Sec. N<sup>o</sup> 1412 Town 2 N. R. 1 East, from which a Hickory 5 Inchs dia bears N 73 W 1 Link  
In Dogwood 5 Inchs dia. bears S 73 E 16 Lks - Land Rich & Level.

North Line continued

- 40.00 Set post corner of 1/4 Sec. from which a W. Oak 20 Inchs dia. bears N 86 W 23 Links, also 20 Inchs dia. bears S 14 E 3 1/4 Lks
- 60.00 Brook 50 Links wide Course South West -
- 80.00 Set post corner of Towns 282. 383 in Range 182 East from which a W. Walnut 10 Inchs dia. bears S 33 W 14 Lks  
also 8 Inchs dia. bears N 44 E 16 Lks - Land the Same

~~S. Boundary T. 3 N. R. 1 E. Random.~~

West Between Towns 283 in Range N 1 East on Random

- 40.00 Set temporary half mile post
- 80.00 Set temporary mile post - Land level & Rich - Timber Oak & Birch Aug<sup>th</sup> Spruce wood

West Line continued

- 40.00 Set temporary half mile post
- 58.00 Brook 100 Links wide Course North
- 80.00 Set temporary mile post - Land the Same

West Line continued.

- 34.00 Brook 200 Links wide Course South West -
- 40.00 Set temporary half mile post
- 80.00 Set temporary mile post - Land the Same -

West Line continued

- 40.00 Set temporary half mile post
- 80.00 Set temporary mile post - Land the Same -



West Line continued

40.00 Set temporary half mile post

80.00 Set temporary mile post - Land the same

West Line continued

40.00 Set temporary half mile post

84.00 Intersected the North &amp; South line 500 lbs North of the Town corner Land the same covered with underbrush Spruce &amp; Redbud

S. Boundary T. 3 N. R. 1 E. corner.

East Between Town 3 N. 2 North, Range 1 East on true line

44.00 Set the half mile post on true line for 1/4 Sec. corner of Sec. N. 31 Town 3 North, Range 1 East from which a Hickory 10 inches dia. bears S 76 E 6 lbs to Dogwood 6 inches dia. bears N 77 E lbs.

East Line continued

84.00 Set the temporary mile post on true line for the corner of Sec. N. 31 T. 3 N. R. 1 East

from which an Elm 8 inches dia. bears S 87 W 15 lbs to Dogwood 8 inches dia. bears N 24 W 8 Links

East Line continued

40.00 Set the temporary half mile post on true line for 1/4 Sec. corner of Sec. N. 32 from which a Beech 6 inches dia. bears N 32 E 14 Links to Dogwood 6 inches dia. bears S 13 E 5 lbs.

East Line continued

80.00 Set the temporary mile post on true line for the corner of Sec. N. 32 T. 3 N. Range 1 East from which a B. Oak 30 inches dia. bears S 55 W 6 lbs to Elm 14 inches dia. bears N 84 E 19 lbs.

East true Line continued

40.00 Set temporary half mile post on true line for 1/4 Sec. corner of Sec. N. 33 from which a Sugar 10 inches dia. bears N 23 E 10 Links to Mt. Oak 8 inches dia. bears S 32 E 17 Links

80.00 Set temporary mile post on true line for corner of Sec. N. 33 T. 3 N. R. 1 E from which a Beech 7 inches dia. bears N 34 E 8 lbs to Sugartree 10 inches dia. bears S 79 W 17 lbs.

East Line continued

40.00 Set temporary half mile post on true line for 1/4 Sec. corner of Sec. N. 34 Town 3 N. R. 1 East from which a Beech 30 inches dia. bears S 15 E 11 lbs - This post stands in a Brook 200 lbs wide course South West

80.00 Set the temporary mile post on true line for the corner of Sec. N. 34 T. 3 N. R. 1 East from which a Beech 24 inches dia. bears N 35 E 25 lbs ditto 10 inches dia. bears N 66 S 36 lbs.

East Line continued

40.00 Set the temporary half mile post on true line for 1/4 Sec. corner of Section N. 35 Town 3 N. R. 1 East from which an Ironwood 5 inches dia. bears N 20 W 15 Links ditto 2 inches dia. bears S 28 E 14 Links

80.00 Set the temporary mile post on true line for the corner of Sec. N. 35 T. 3 N. Range 1 East from which a Sassafras 5 inches dia. bears N 6 E 16 Links to Ashlar 23 inches dia. bears S 14 E 28 lbs.

East Line continued

40.00 Set the temporary half mile post on true line for 1/4 Sec. corner from which a Mt. Oak 20 inches dia. bears S 9 W 20 Links to Elm 10 inches dia. bears S 14 W 28 Links

80.00 Town corner

Part of E. Boundary of T. 1 N. 2 E.

North Between Towns 1 N. 1 South in Ranges N. 2, 3 East of 2<sup>nd</sup> Meridian

from the 1/4 Sec. corner of Sec. N. 13 Town 1 S. R. 2 East

80.00 Set post corner of Sec. N. 13 T. 1 S. R. 2 East from which a Hickory 7 inches dia. bears S 52 E 7 lbs to a Mt. Oak 10 inches dia. bears N 87 E 26 Links - Thin barren soil

North Line continued

40.00 Set a half mile post from which a B. Oak 10 inches dia. bears S 12 E 27 lbs, ditto 10 inches dia. bears N 54 E 18 lbs

53.40 Hickory 18 inches dia.

80.00 Set post corner of Sec. N. 1 T. 1 S. R. 2 East from which a B. Oak 20 inches dia. bears S 13 W 15 lbs to a Hickory 10 inches dia. bears N 24 W 13 lbs - Very thin Broken Soil



Part of E. Boundary of T. 5 N. R. 6 E.  
Continued from page 98.

North 40.00	On E. side of Sec 36. T. 5 N. R. 6 E. Remasuring. Set 9' post. from which a Beech 10 in dia 6P N 24 or 8 1/2 E +
80.00	a " 6 " " " S 24 E. 16 " " Set post Cor. to Sec 25 + 36. from which a Beech 20 in dia 6P. N 42 E 9 1/2 E + a W. Oak 15 " " " S. 3 E 23 " " Land flat. Limber Beech &c.

North 17.00 40.00	On E. side of Sec. 35. T. 5 N. R. 6 E. Brook 10 1/2 wide 500' Set 9' post from which an Elm 20 in dia 6P. S. 59 or 6 1/2 E + a Gum 6 " " " N. 59 E. 24 " "
80.00	Set post. Cor. to Sec. 24 + 25 from which a Beech 10 in dia 6P. N 32 or 14 1/2 E + a " 8 " " " S. 85 E. 25 " " Land the same.

Boundary Continued on page 98.

East Boundary of T. 3 N. R. 1 E.	
North 18.50 40.00	On E. side of Sec 36. T. 3 N. R. 1 E. a Poplar 44 in dia. Set 1/4 post. a Gum 14. N. 68 E. 11 1/2 E + a W. Oak 10. S. 77 or 22 " "
58.68 80.00	an Ash 12 in dia. Set post Cor. to Sec 25 + 36. from which a Beech 16. S. 5 or 62 1/2 E + a Walnut 13. S. 43 E. 38 " " Good Land. Beech. Poplar. Walnut. Oak & Sugar.

North 40.00	On E. side of Sec 25. T. 3 N. R. 1 E. Set 1/4 post. a Quaking ash 12. S. 5 or 24 1/2 E + an Elm 4. " " " "
58.62 80.00	a Beech 12 in dia. Set post Cor. to Sec 24 + 25. from which a Poplar 8. S. 17 E. 13 1/2 E + a W. Oak 20. West 56 " " Land level. Oak. Poplar & Beech. Some brush.

E. Boundary of T. 3 N. R. 1 E. Continued. '77

North 8.50 37.00 40.00	On E. side of Sec 24. T. 3 N. R. 1 E. a Branch 12 1/2 wide. Round W. a " 8 " " " " "
58.71 80.00	Set 1/4 post. a W. Oak 12. S. 48 or 22 1/2 E + a Beech 16. N. 29 E. 36 " " a W. Oak 16 in dia. Set post. Cor. to Sec. 13 + 24 from which a W. Oak 20. N 32 E 42 1/2 E + a W. " 10. N 63 or 32 " " Land level. Oak. Hickory. Beech &c.

North 26.75 35.37 40.00	On E. side of Sec. 13. T. 3 N. R. 1 E. a W. Oak 14 in dia. a " 18 " " " Set 1/4 post. an Ash 10. N 22 1/2 or 20 1/2 E + a W. Oak 8. N 39 E. 10 " "
46.07 80.00	a W. Oak 16 in dia. Set post. Cor. to Sec. 12 + 13. from which a Poplar 15 S. 37 or 29 1/2 E + a " 16 S. 11 E 12 " " Land level. Oak & Poplar.

North 40.00	On E. side of Sec. 12. T. 3 N. R. 1 E. Set 1/4 post. a W. Oak 15. N 28 E. 25 1/2 E + a W. " 16. N 29 or 23 " "
65.86 80.00	a W. Oak 24 in dia. Set post Cor. to Sec. 1 + 12. from which a W. Oak 33. S. 58 E. 23 1/2 E + an Ash 12. N. 43 or 24 " " Land level. Oak. Poplar. Ash & Hickory.

North 15.75 40.00	On E. side of Sec 1. T. 3 N. R. 1 E. a W. Oak 20 in dia. Set 1/4 post. a W. Oak 12. S. 22 E. 27 1/2 E + an Ash 16. S. 73 or 38 " "
49.56 50.50	To the Indian boundary. 850 1/2 N. of 83 mile post Set post. from which a W. Oak 10. N. 79 or 19 1/2 E + a Poplar 12. N. 54 E. 47 " " I then proceeded 64 ch to white R. & up it.



North  
40.00  
80.00  
On E. side of Sec 36. T. 5 N. R. 6 E. Remasuring,  
Set g<sup>l</sup> post. from which  
a Beech 10 in dia b<sup>d</sup> N 24 or 8 1/2 Kst  
a " 6 " " " S 24 E. 16 " "  
Set post cor. to sec 25 & 36, from which  
a Beech 20 in dia b<sup>d</sup> N 42 E 9 1/2 Kst  
a m. oak. 15 " " " S 3 E 23 " "  
Land flat, timber Beech &c.

North  
17.00  
40.00  
80.00  
On E. side of Sec. 35. T. 5 N. R. 6 E.  
Brook 10 Kds. wide m.  
Set g<sup>l</sup> post from which  
an Elm 20 in dia b<sup>d</sup> S. 59 or 6 1/2 Kst  
a Gum 6 " " " N. 59 E. 24 " "  
Set post. Cor. to sec. 24 & 25 from which  
a Beech 10 in dia b<sup>d</sup> N 32 or 14 1/2 Kst  
a " 8 " " " S. 85 E. 25 " "  
Land the same.

Boundary Continued on page 98.

## East Boundary of T. 3 N. R. 1 E.

North  
18.50  
40.00  
58.68  
80.00  
On E. side of Sec 36. T. 3 N. R. 1 E.  
a Poplar 44 in dia.  
Set 1/4 post. a Gum 14. N. 68 E. 11 Kst  
a m. Oak 10. S. 77 or 22 " "  
an Ash 12 in dia.  
Set post cor. to sec 25 & 36, from which  
a Beech 16. N. 5 or 6 1/2 Kst  
a Walnut 13. S. 43 E. 58 " "  
Good Land. Beech. Poplar. Walnut. Oak & Sugar.

North  
40.00  
58.62  
80.00  
On E. side of Sec 25. T. 3 N. R. 1 E.  
Set 1/4 post. a Quaking Ash 12. S. 5 or 24 Kst  
an Elm 11. " "  
a Beech 12 in dia.  
Set post cor. to sec 24 & 25, from which  
a Poplar 8. S. 17 E. 13 Kst  
a m. Oak 20. West 56 " "  
Land level. Oak. Poplar & Beech. Some brush.

North  
8.50  
37.00  
40.00  
58.71  
80.00  
On E. side of Sec 24. T. 3 N. R. 1 E.  
a Branch 12 Kds wide, Course m.  
a " 8 " " " " "  
Set 1/4 post. a m. Oak 12. S. 48 or 22 Kst  
a Beech 16. N. 29 E. 36 " "  
a m. Oak 16 in dia.  
Set post. Cor. to sec 13 & 24 from which  
a m. Oak 20. N 32 E 12 1/2 Kst  
a m. " 10. N 63 or 32 " "  
Land level. Oak. Hickory. Beech &c.

North  
26.75  
35.37  
40.00  
46.07  
80.00  
On E. side of Sec. 13. T. 3 N. R. 1 E.  
a m. Oak. 14 in dia.  
a " 15 " " "  
Set 1/4 post. an Ash 10. N 23 1/2 or 20 Kst  
a m. Oak 8. N 39 E. 10 " "  
a m. Oak. 16 in dia.  
Set post. Cor. to sec 12 & 13 from which  
a Poplar 15 S. 87 or 29 Kst  
a " 16 S. 11 E 12 " "  
Land level. Oak & Poplar.

North  
110.00  
65.86  
80.00  
On E. side of Sec. 12. T. 3 N. R. 1 E.  
Set 1/4 post. a m. Oak 13. N 28 E. 25 Kst  
a m. " 16. N 29 or 23 " "  
a m. Oak 24 in dia.  
Set post cor. to sec 1 & 12. from which  
a m. Oak 33. S. 58 E. 23 Kst  
an Ash 12. N. 43 or 24 " "  
Land Level. Oak. Poplar. Ash & Hickory.

North  
15.75  
40.00  
49.56  
Supposed to be }  
59.50  
On E. side of Sec. 1. T. 3 N. R. 1 E.  
a m. Oak 20 in dia.  
Set 1/4 post. a m. Oak 12. S. 22 E. 27 Kst  
an Ash 16. S. 73 or 38 " "  
To the Indian boundary. 850 Kds N. of 83 mile post  
Set post. from which a m. Oak 10. N. 79 or 19 Kst  
a Poplar 12. N. 54 E. 47 " "  
I then proceeded 64 ch<sup>t</sup> to white R. & up it.



Township N. 3. North Range N. 1 East of the Meridian

- North Between Sec. 35 & 36.  
 40.00 Set a half mile post - From which a Beech 15 In. Diam. Bears S 60 E 14 Chs - Beech 10. S 33 W. 14 links.  
 76.00 Brook 10 Course West.  
 80.00 Set post corner of Sec. 25, 26, 35 & 36 - From which a Beech 12 In. Diam. Bears N 86 W. 15 Chs - Do 12 In. Diam. Bears S 71 E. 18 links - Level Hickory, Beech & Ash.  
 East. Between Sec. 36 & 25 On Random.  
 40.00 Set a temporary half mile post.  
 80.00 Intersected the N & South line 28 links South of Sec. corner - Same Land &  
 West. Between 25 & 36 On True Line.  
 40.00 Set the temporary post at average distance on true line for  $\frac{1}{4}$  Sec. corner From which a Beech 20 In. D. Bears S 19 E. 24 - Do 18 In. D. Bears S 30 E. 13 links.  
 80.00 Sec. corner.  
 North Between Sec. 25 & 26.  
 40.00 Set a half mile post - From which a Beech 20 In. D. Bears S 10 W. 21 Chs Do 10 In. D. Bears N 69 W. 13 Chs.  
 56.50 Brook 15 Chs. Course W.  
 80.00 Set post corner of Sec. 23, 24, 25 & 26. - From which a Beech 20 S 66 E 11 Chs - Do 12 In. Diam. Bears S 22 W. 20 Chs - Land the same Underbrush - & yucca wood  
 East. Between Sec. 24 & 25 On Random.  
 40.00 Set a temporary half mile post.  
 74.00 Brook 10 Chs N. W.

Township N. 3. North Range N. 1 East of the Meridian Continued.

- 80.96 Intersected N & S line 15 links - Land level and brushy - Timber Oak & Hickory  
 West. Between 24 & 25 On True Line.  
 40.42 Set the temporary post at Average Distance on True Line for  $\frac{1}{4}$  Sec. corner From which a B. Oak 10 S 27 E. 29 Chs - Dogwood 5 S 31 E 13.  
 80.96 Sec. corner.  
 North Between Sec. 23 & 24.  
 18.25 Poplar 20 In. D.  
 17.00 Brook 10 Chs N. W.  
 40.00 Set a half mile post - From which a quaking Asp 10 S. 37 W. 12 links - And a W. Oak 10 S 42 E. 3 links.  
 66.00 Beech 20 In. Diam.  
 80.00 Set post corner of Sec. 13, 14, 24 & 25 From which a Poplar 10 In. D. Bears N 6 W. 16 Chs - An Elm 10 S 47 E. 17 links - Land very brushy and level.  
 East. Between 13 & 24 On Random.  
 40.00 Set a temporary half mile post.  
 42.50 Brook 15 links wide Course N. W.  
 80.60 Intersected the N & South line 10 Chs South of Sec. corner. Land the same  
 West. Between 13 & 24 On true Line.  
 40.30 Set the temporary post at Average Distance on true line for  $\frac{1}{4}$  Sec. corner From which a B. Oak 10 S 21 W. 13 links - Beech 20 In. S 31 E. 6 Chs.  
 80.00 Sec. corner.  
 North Between Sec. 13 & 14.  
 40.00 Set a half mile post - From which a Beech 10 In. Diam. Bears S 28 W. 29 Chs - And a Dogwood 6 S 22 E 7 links.  
 80.00 Set post corner of Sec. 11, 12, 13 & 14 - From which a Poplar 24 In. Diam. Bears S. 26 W. 17 Chs - Beech 24 In. Diam. Bears East 34 Chs Good level farming land



40  
Township N. 3. North Range N. 1 East of the Meridian Continued

- East. Between 12 & 13 On Random.  
5.50 Brook 20 Chs. N. W.  
40.00 Set a temporary half mile post.  
80.37 Intersected the N. & South line 6 links South of Sec. corner. Land the same  
West. Between 12 & 13. On True Line.  
40.12 Set the temporary half mile post at Average Distance on true line for 1/2 Sec. corner. From which a Beech 10 In. D. N 28 W. 20 Chs. Dogwood 6 S. 23 E. 17 Chs.  
80.37 Sec. corner.  
North Between Sec. 11 & 12  
7.50 Brook 13 Chs. wide Course S. W.  
40.00 Set a half mile post. From which a Dogwood 6 In. S 44 E 23 links. Beech 10 In. Diam. Bears S 41 W 18 links.  
80.00 Set post corner of Sec. 1, 2, 11 & 12. From which a Beech 2 1/2 In. Diam. Bears S 73 W. 19 Chs. - W. Oak 2 1/2 In. D. Bears S 49 E 26 links - Good level farming land.  
East. Between Sec. 1 & 12 On Random.  
40.00 Set a temporary half mile post.  
79.96 Intersected the N. & South line 5 Chs S of Sec. corner. Rolling Oak timbered Land.  
West. Between 1 & 12 On true Line.  
39.72 Set the temporary post at Average Distance on true line for 1/2 Sec. corner. From which a Dogwood 6 S 61 W 7 Chs. - W. Oak 12 In. D. Bears N 80 E 32 Chs.  
79.96 Sec. corner.

41  
Township N. 3. North Range N. 1 E of the Meridian Continued

- North Between Sec. 1 & 2.  
18.27 Set a post on the Indian boundary. From which a W. Oak 2 1/2 In. D. Bears S 28 E 13 Chs. - Sugar 10 N 50 W 17 Chs. - Land the same.  
West. Between 2 & 11.  
25.47 Set post on the Indian boundary. From which a Sugar 10 In. D. Bears S 6 W. 15 Chs. - And a Poplar 30 In. D. Bears S 35 E. 52 Chs. Land the same  
November 19<sup>th</sup> 1806.  
North Between Sec. 35 & 34.  
15.00 Brook 100 Chs. S. W.  
40.00 Set a half mile post. From which a Beech 10 S 67 E 16 Chs. - D 10 In. D. Bears S 53 W. 20 Chs.  
75.00 Gum 19 In. D.  
80.00 Set post corner of Sec. 26, 27, 35 & 34. From which a Beech 12 In. Diam. Bears S 54 E 16 Chs. - Hickory 20 N 31 W. 15 Chs. - Good farming Oak and Hickory & Beech timbered Land.  
East. Between Sec. 26 & 35. On Random.  
20.00 Brook 8 Chs. South.  
39.00 Brook 10 Chs. Course S.  
40.00 Set a temporary half mile post.  
80.00 Intersected the N & S line 15 links South of Sec. corner. Land the same.  
West. Between 26 & 35 On True Line.  
40.00 Set the temporary post at Average distance on true line for 1/2 Sec. corner. From which a Beech 20 In. Diam. Bears N 65 E 44 Chs. D 10 In. D. Bears S 32 W 13 Chs.  
20.00 Sec. corner.  
North Between Sec. 26 & 27.



Township N. 3 North - Range N. 1 East. of the Meridian Continued

- 40.00 Set a half mile post - From which a Beech 12 In. D. Bears N 2 W 25 Chs  
W. Oak 12 S 40 E 4.
- 41.95 Poplar 30 In. D.
- 68.50 Brook 10 Chs West.
- 80.00 Set post corner of Sec. 26, 27, 22 & 23 - From which a Beech 8 S 24 E 12 links  
Beech 8 In. Diam. Bears S 73 W 9 Chs. Land the same.
- East. Between Sec. 23 & 26 On Random.
- 40.00 Set a temporary half mile post.
- 65.50 Brook 10 Chs North.
- 80.00 Intersected the N. South line 15 Chs. S of Sec. Corner, Land the same.
- West. Between Sec. 23 & 26 On True Line.
- 40.00 Set the temporary half mile post at Average Distance on true line for  
1/4 Sec. Corner - From which an Elm 12 In. Diam. Bears N 31 E. 18 Links  
Beech 10 In. Diam. Bears S 87 E 12 Chs.
- 80.00 Sec. Corner.
- North Between Sec. 22 & 23.
- 40.00 Set a half mile post - From which a Beech 15 In. D. Bears N 5 W.  
18 Chs - And a W. Oak 20 In. D. Bears S 32 W. 29 Chs.
- 75.00 Brook 20 Chs West.
- 80.00 Set post corner of Sec. 14, 15, 22 & 23 - From which a B. Oak 10 In. Diam.  
Bears S 25 E 14 Chs - Poplar 6 In. D. Bears N 39 W. 6 Chs. Land the  
same kind.
- East Between Sec. 14 & 23 On Random.
- 40.00 Set a temporary half mile post.
- 65.00 Brook 10 links S.

Township N. 3 North - Range N. 1 East. of the Meridian Continued

- 80.00 Intersected the N. S. Line 2 Chs South of Sec. Corner - Land the same.
- West. Between 14 & 23 On true Line
- 40.00 Set the temporary post at Average Distance on true line for 1/4 Sec. Corner - From  
which a Beech 15 In. Diam. Bears N 42 E 6 - Dogwood 6 S 68 W 11 Chs.
- 80.00 Sec. Corner.
- North Between Sec. 14 & 15.
- 23.90 W. Oak 22 In. D.
- 40.00 Set a half mile post - From which a Gum 12 S 20 E 2.3 - Beech 20 S 26 W. 27 Chs.
- 80.00 Set post corner of Sec. 14, 15, 10 & 11 - From which a Hickory 10 In. D. Bears  
S 5 W. 24 Chs. - D. 8 In. D. Bears S 54 E. 10 links. - Thin Brushy Oak &  
Hickory Timbered Soil.
- East. Between Sec. 11 & 14 On Random.
- 40.00 Set a temporary half mile post.
- 79.64 Intersected the N. South line 24 Chs. South of Sec. Corner - Land the same.
- West. Between Sec. 11 & 14 On true line.
- 39.82 Set the temporary post at Average distance on true line for 1/4 Sec. Corner - From  
which a W. Oak 12 In. Diam. Bears N 21 W. 16 Chs - Hickory 12 S 82 W. 17 Chs.
- 79.64 Sec. Corner.
- North Between 10 & 11
- 40.00 Set a half mile post - From which a Dogwood 4 In. D. Bears S 80 W 17 Chs  
W. Oak 12 In. Diam. Bears S 67 E. 3 links.
- 50.66 Set post on the Indian boundary - From which a Gum 12 In. D. Bears S 70 E  
24 - W. Oak 10 S 16 W. 43 links. - Land the same.
- November 20<sup>th</sup>
- North Between Sec. 34 & 33.
- 35.70 W. Oak 20 In. D.



Township N. 3. North Range N. 1 East of the Meridian Continued.

- 40.00 Set a half mile post - From which a Dogwood 3 In. D. Bears S 56 E 13 Chs - D<sup>o</sup> 5 In. D. Bears N 47 W. 5.
- 41.50 Brushy pond 3.50 wide.
- 20.00 Set post corner of Sec. 22, 27, 33 & 34 - From which a Gum 15 In. D. S 11 E 40 Chs Sugar 10 In. D. Bears N 45 E. 9 Chs Oak Timbered Land
- East. Between Sec. 27 & 34 On Random.
- 18.00 Brook 10 Chs Course N. W.
- 46.00 Set a temporary half mile post.
- 80.00 Intersected the N. & S. line 9 Chs. S of Sec. Corner Land the same.
- West. Between 27 & 34 On true line
- 40.00 Set the temporary post at average Distance for  $\frac{1}{2}$  Sec. Corner - From which a Beech 10. N 86 E 6 - D<sup>o</sup> 8 N 32 W. 19 Chs.
- 80.00 Sec. Corner.
- North Between Sec. 27 & 28.
- 31.50 Brook 10 Chs. N. W.
- 40.00 Set a half mile post - From which a Beech 10 In. D. Bears S 2 W. 39 Links D<sup>o</sup> 12 In. D. Bears N 43 W. 8 Chs.
- 80.00 Set a post corner of Sec. 27, 28, 21 & 22 From which a Hickory 8 In. Diam<sup>r</sup> bears S 25 W. 10 Chs - Elm 2 In. D. Bears S 72 E. 15 Chs - Land the same.
- East. Between Sec. 27 & 22 On Random.
- 40.00 Set a temporary half mile post.
- 47.00 Pond 200 Chs wide.
- 79.80 Intersected the N. & S. line 15 Chs S of Sec. Corner - Land the same.
- West. Between 22 & 27 On true line.
- 39.90 Set the temporary post at Average Distance in true line for  $\frac{1}{2}$  Sec. Corner

Township N. 3. North Range N. 1 East of the Meridian Continued.

- From which a Beech 20 In. D. Bears S 46 W. 7 Chs - Beech 8 N 22 E 13 Links.
- 79.80 Sec. Corner.
- North Between 21 & 22.
- 40.00 Set a half mile post - From which a Gum 10 In. D. S 7 E 44 Chs - W. Oak 3. 140 E 10 Chs.
- 80.00 Set post corner of Sec. 21 & 22, 13 & 16 - From which a W. Oak 20 In. D. Bears N 20 E 23 Chs - Poplar 10 In. D. Bears N 50 E 30 Chs - Brushy Oak Timbered Soil
- East Between Sec. 13 & 22 On Random.
- 40.00 Set a temporary half mile post.
- 62.50 Brook 20 Chs. N. W.
- 80.30 Intersected N. & S. line 4 Chs S of Sec. Corner - Land the same.
- West. Between 13 & 22 On true line.
- 40.15 Set the temporary post at Average Distance on true line for  $\frac{1}{2}$  Sec. Corner - From which a W. Oak 12 N 22 E. 37 Chs. - D<sup>o</sup> 24 In. D. Bears S 33 W. 37 Chs
- 80.30 Sec. Corner.
- North Between Sec. 13 & 16.
- 38.75 W. Oak 20 In. Diam<sup>r</sup>.
- 40.00 Set a half mile post - From which a Poplar 8 In. D. Bears S 13 E 31 Chs - And a Wild Cherry 6 In. D. N 1 W. 7 Chs. - This post stands in the South Boundary of a very Brushy Briary Thicket.
- November 21<sup>st</sup> 1806.
- West. Between Sec. 10 & 15
- 20.00 To a very brushy Briary Thicket.
- North Between 33 & 32.
- 40.00 Set a half mile post - From which a W. Oak 20 In. D. Bears S 11 W 30 Chs W. Oak 24 In. D. Bears N 42 E. 13 Chs.



Township N. 3 North Range N. 1 East of the Meridian Continued.

- 37.30 W. Oak 30 Ins. Diam.  
 30.00 Set post corner of Sec. 23, 29, 32 & 33 — From which a Dogwood 6 Ins. D. bears S 44 E 21 lks. — Poplar 30 Ins. D. bears S 33 W 12 lks. Land rich & brushy with spice woods.  
 East. Between 33 & 28 On Random.  
 40.00 Set a temporary half mile post.  
 20.65 Intersected the N & South line 29 links South of Sec. corner. Land the same  
 West. Between Sec. 23 & 33 On true line.  
 40.32 1/2 Set the temporary post at average distance on true line for 1/2 Sec. corner From which a Poplar 8 N 10 W. 10 — Dogwood 6 S 62 W. 4 lks.  
 20.65 Section corner.  
 North Between Sec. 28 & 29.  
 40.00 Set a half mile post — From which a W. Oak 20 Ins. Diam. Bears S 50 W 21 lks. — W. Oak 18 S 19 E 44 lks.  
 51.50 B. Oak 18 Ins. Diam.  
 30.00 Set post corner of Sec. 23, 29, 20 & 21 — From which a Poplar 30 Ins. Diam. Bears S 36 E. 20 lks. — W. Oak 3 Ins. D. Bears N 63 W. 11 Links, Land the same  
 East. Between Sec. 23 & 21 On Random.  
 40.00 Set a temporary half mile post.  
 30.35 Intersected the N & South line 8 lks South of Sec. corner. Land rich & level.  
 West. Between 21 & 28 On true line.  
 40.17 1/2 Set the temporary post at average distance on true line for 1/2 Sec. corner From which a B. Oak 10 Ins. D. S 32 W 8 lks. — W. Oak 12 N 18 E 10 lks.  
 30.35 Sec. corner.  
 North Between Sections 20 & 21.

Township N. 3 North Range N. 1 East of the Meridian Continued.

- 7.90 Red Oak 15 Ins. D.  
 40.00 Set a half mile post from which a Beech 10 Ins. D. Bears S 32 E 14 1/2 Links B. Walnut 10 Ins. D. N 22 W. 8 lks.  
 30.00 Set post corner of Sec. 21, 20, 16 & 17 From which a W. Oak 30 Ins. Diam. Bears S 40 W. 15 lks. — Gum 10 Ins. Diam. Bears S 29 E 14 — Land the same.  
 North Between Sec. 16 & 17.  
 32.35 Set post on the Indian boundary — From which a Maple 10 Ins. Diam. Bears S 75 W 23 links — And a Beech 12 Ins. Diam. Bears 42 W. 22 links Land the same.  
 West. Between Sec. 20 & 17.  
 40.00 Set a half mile post — From which a Hickory 14 Ins. D. Bears S 33 E 23 links — Dogwood 6 Ins. Diam. Bears N 33 W 9 lks.  
 Set post corner of Sec. 20 & 17 on the Indian boundary — From which a Sugar 10 S 22 E 10 — And a Hickory 12 N 16 W. 17 lks. Land the same kind  
 East. Between 16 & 21 On Random.  
 40.00 Set a temporary half mile post.  
 30.00 Intersected the N & South line 7 lks S of Sec. corner — Land rich — Timber Poplar, Ash.  
 West. Between 16 & 21 On true line.  
 40.00 Set the temporary post on true line for 1/2 Sec. corner — From which a W. Oak 3 Ins. D. Bears N 67 E. 21 lks. — Poplar 20 Ins. D. Bears S 9 E. 16 lks.  
 30.00 Sec. corner.  
 North Between Sec. 21 & 32.  
 40.00 Set a half mile post — From which a Poplar 20 Ins. D. Bears S 13 E 34 lks. W. Oak 12 Ins. Diam. Bears N 20 E 15 lks.  
 30.00 Set post corner of Sec. 29, 30, 31 & 32 — From which a Beech 15 Ins. Diam.



Township N. 3. North Range N. 1 East of the Meridian Continued

- Bears N 72 E. 7 lks - D<sup>r</sup> 10 In. Diam<sup>r</sup> bears S 50 W. 16 lks - Land rich & rolling many sink holes.
- East. Between Sec. 32 & 29 On Random.
- 40.00. Set a temporary half mile post.
- 80.40. Intersected the N & S line 25 lks South of Sec. Corner. Land the same.
- West. Between 29 & 32 On true line
- 40.20. Set the temporary post at Average Distance on true line for 1/4 Sec. Corner - From which a Gum 10 S 54 E. 15 - Sugar 8 S 83 W. 27.
- 80.40. Sec. Corner.
- North. Between Sec. 29 & 30
- 40.00. Set a half mile post - From which a Beech 10 In. D<sup>r</sup> Bears S 73 E. 23 lks. - D<sup>r</sup> 20 In. Diam<sup>r</sup> Bears N 83 W. 4 lks.
- 80.00. Set post corner of Sec. 19, 20, 29, 30 - From which a Poplar 6 In. D<sup>r</sup> S 75 E 12 lks - Redbud 6 In. D<sup>r</sup> bears N 36 W. 23 lks. Land the same Rich
- East. Between Sec. 20 & 29 On Random.
- 40.00. Set a temporary half mile post.
- 80.40. Intersected the N & South line 39 lks. North of Sec. Corner - Land the same
- West. Between 20 & 29 On true line
- 40.20. Set the temporary post at Average Distance for 1/4 Sec. Corner - From which a Hickory 20 In. D<sup>r</sup> Bears S 81 E 9 - W. Oak 10 S 15 W. 42
- 80.40. Sec. Corner.
- North. Between Sec. 19 & 20.
- 33.00. Brook 10 lks. Course W.
- 40.00. Set a half mile post - From which a Beech 20 In. Diam<sup>r</sup> Bears S 58 E 11 lks - Poplar 10 In. Diam<sup>r</sup> Bears S 9 E 48 lks.

Township N. 3 North Range N. 1 E of the Meridian Continued

- 44.45. Poplar 20 In. Diam<sup>r</sup>.
- 67.71. Set post corner of Sec. 19 & 20 on the Indian boundary - From which a Beech 10 In. Diam<sup>r</sup> Bears N 32 E 23 lks - And a Poplar 48 In. D<sup>r</sup> Bears -
- West. Between Sec. 19 & 30.
- 9.65. W. Oak 20 In. Diam<sup>r</sup>.
- 32.00. Brook 12 lks South
- 40.00. Set a half mile post - From which a Beech 20 In. D<sup>r</sup> Bears S 53 W. 46 lks W. Oak 30 In. Diam<sup>r</sup> Bears N 20 E 36.
- 64.65. Old Indian boundary.
- 89.24. Set post corner of Sec. 19 & 30 on the Meridian 6.28 South of Sec. Corner - From which a Hickory 12 S 54 W. 33 lks - Elm 5 S 2 W. 35 lks.
- November 22<sup>nd</sup> 1806
- West. Between Sec. 30 & 31.
- 40.00. Set a half mile post - From which a Sugar 10 In. Diam<sup>r</sup> Bears N 25 W 16 lks - Do 13 In. Diam<sup>r</sup> Bears S 48 E 7 lks.
- 74.10. W. Oak 30 In. Diam<sup>r</sup>
- 86.75. Set post corner of Sec. 30 & 31 on the Meridian 2.32 lks N of the mile post - From which a B Walnut 10 In. D<sup>r</sup> Bears N 81 E. 13 lks. - Ironwood 5 S 37 W. 9 lks. - Very Rich Level Land - Timber Ash Walnut

Surveyed by

Arthur Henry

Deputy Surveyor.



# Township N° 3 North, Range N° 1 East 2<sup>nd</sup> Mer.

[Continued from Vol. 1 N. E. p. 49]

**Range line. Var. 6° 30' E**

North On the East boundary of Sec. 1,  
from a post on the old boundary.  
C. L. 15.00 Set post corner of townships  
3 & 4 N. Ranges 18 & 2 E, from  
which an Ironwood 6 N 48 W 7  
Do 5 N 27 E 3  
Oak & Hickory land.  
Arthur Henrie, Es.

40.09 1/4 Sec. cor. W. Oak - N 30 E 6  
W. ash 10 S 58 W 37

80.19 Sec. cor.

North Between Secs. 2 & 3

40.00 Set 1/4 Sec. post - Dogwood 6 S 10 E 37  
Do 6 N 2 E 15

81.25 Set post on North boundary 59 ths  
West of Sec. cor.

W. Oak 10 S 77 W 11  
Do 10 S 76 E 32

Land same.

## Subdivision

North Between Secs. 18 & 2

40.00 Old 1/4 Sec. post

79.00 Set post on the North bound-  
ary, 16 links East of corner,  
from which a

W. ash 12 N 19° W 17  
Dogwood 6 S 19 E 9

Rolling land; Oak & Hickory.

North Between Secs. 10 & 11

40.00 Old 1/4 Sec. post.

80.00 Set post corner of Secs. 2, 3, 10, 11  
from which a

W. Oak 8 S 40° E 20

B. Oak 12 S 50 W 21

Rolling land; Oak & Hickory;  
many Sink holes.

East Random line between Secs. 2 & 11

40.00 Temporary 1/4 Sec. post

47.00 Broke 20 links - course North

80.19 Intersected N & S. line at 2.23 ths  
South of Sec. corner.

Land the same

West Corrected -

North Between Secs. 15 & 16

40.00 1/4 Sec. post - in thicket

80.00 Set post cor. of Secs. 9, 10, 15, 16, in  
a thicket - W. Oak 8 S 53 W 75.

No other near -

This mile covered with brush & briars

East On Random between Secs. 10 & 15

40.00 Set temporary 1/4 Sec. post

81.25 Intersected N & S line 100 South  
Land same

West Corrected

40.62 1/4 Sec. post - W. Oak 9 N 52 E 36

No other near

81.25 Sec. cor.

North Between Secs. 9 & 10.

40.00 Set 1/4 Sec. post - in thicket

80.00 Set post cor. of Secs. 3, 4, 9, 10, on  
north side of the thicket

Gum 12 S 77 W 5

W. Oak 8 S 19 E 12

Land the same

East Between Secs. 3 & 10 on Random

40.00 Temporary 1/4 Sec. post

81.25 Intersected N & S line, 1.29 ths South  
Land Rolling; Oak & Hickory



## T.3N. R.1E.

West	Corrected between Sect. 3 & 10		Hickory 10 N 17 W 20
40.62	Set 1/4 Sec. post on true line		Poplar 12 S 12 W 8
	Hickory 8 S 5 E 9		Land rolling; oak & Hickory
	B. Oak 8 N 4 E 8		
81.25	Sec. cor.	East	Between Sect. 4 & 9 on random
North	Between Sect. 3 & 4	40.00	Temporary 1/4 Sec. post
14.50	W. Oak 20 in. dia.	80.80	Intersected N & S line 84 lbs South
40.00	Set 1/4 Sec. post. W. Oak 10 S 15 W 15		Land Same
	do 9 N 15 W 24	West	Corrected
76.25	Brook 12 lbs course N.W.	40.40	Set 1/4 Sec. post on true line
83.12	Set post on North boundary 200		W. Oak 12 N 69 E 32
	West of cor. Dogwood 6 N 24 W 1		Hickory 8 S 64 E 39
	Hickory 10 S 60 W 15	80.80	Sec. cor.
	Land Same.	North	Between Sect. 4 & 5
North	Between Sect. 16 & 17	40.00	Set 1/4 Sec. post - W. Oak 8 N 24 E 16
40.00	Set 1/4 Sec. post - Dogwood 8 S 55 W 9		Sugar 8 S 9 E 14
	Dogwood 7 N 8 E 11	84.45	Set post on North boundary 150 lbs
80.00	Set post cor. of Sect. 8, 9, 16, 17		West of corner
	Dogwood 6 S 36 E 4		W. Oak 8 S 67 E 6
	Hickory 10 N 20 W 21		do 8 S 61 W 12
	Land Rolling; Oak & Hickory;		Land Same
	Undergrowth, Spruce.	North	Between Sect. 19 & 20
East	Between Sect. 9 & 16, on random -	40.00	Old 1/4 Sec. post
40.00	Temporary 1/4 Sec. post	80.00	Set post cor. of Sect. 17, 18, 19, 20
81.25	Intersected N & S line 50 lbs South		Beech 10 S 35 E 21
	Land brushy		do 10 N 61 W 11
West	Corrected		Land rich; Sugar, Beech, Poplar, Oak.
40.62	Set 1/4 Sec. post on true line	West	Between Sect. 18 & 19
	W. Oak 10 S 4 E 22	40.00	Set 1/4 Sec. post - Sugar 8 S 20 W 7
	do 24 S 63 E 25		do 8 S 43 E 20
81.25	Sec. corner	66.60	Hickory 12 in. dia.
North	Between Sect. 8 & 9	91.29	Set post on West boundary 5.37
40.00	Set 1/4 Sec. post. W. Oak 8 N 50 W 23		South of cor. - Beech 8 N 60 E 17
	Sassafras 6 S 48 E 17		do 8 N 30 W 15
77.90	W. Oak 20 in. dia.		Land rolling; Oak & Hickory
80.00	Set post cor. of Sect. 4, 5, 8, 9	East	Between Sect. 17 & 20 on random
		8.50	Pond 5 ch. wide, N. & S.

## T.3N. R.1E. 2nd N.

40.00	Set temporary 1/4 Sec. post	West	Corrected Between Sect. 5 & 8
81.00	Intersected N & S line 100 South	40.26	Set 1/4 Sec. post on true line.
	Land Same.		W. Oak 8 S 48 E 19
West	Corrected		Poplar 12 N 42 E 18.4.
40.50	Set 1/4 Sec. post on true line	North	Between Sect. 5 & 6
	Poplar 8 N 72 W 12	40.00	Set 1/4 Sec. post - W. Oak 20 S 18 W 19
	Sassafras 6 S 3 W 21		Dogwood - 577 E 13
81.00	Sec. cor.	84.66	Intersected North boundary, 317 West
North	Between Sect. 17 & 18		of Sec. cor. - W. Oak 8 S 78 E 8
22.00	Beech 12 in. dia.		do 8 N 55 W 13
40.00	Set 1/4 Sec. post - Hackberry 8 S 10 W 21		Land Same
	Beech 8 S 73 E 9	West	Between Sect. 7 & 18
80.00	Set post corner of Sect. 7, 8, 17, 18	40.00	Set 1/4 Sec. post - W. Oak 20 N 19 E 10
	Dogwood 7 S 81 W 18		do 15 S 66 W 34
	Poplar 24 N 36 W 15	55.80	Poplar 12 in. dia.
	Land rich; Poplar, Oak, Hickory.	93.11	Set post on West boundary 5.37 lbs
East	Between Sect. 8 & 17 on random.		South of cor. Elm 8 S 49 W 11
40.00	Set temporary 1/4 Sec. post		Beech 7 S 57 E 38
80.50	Intersected N & S line 95 South		Land Rolling & brushy - Oak and
	Land Same		Hickory
West	Corrected	West	Between Sect. 6 & 7
40.25	Set 1/4 Sec. post on true line	40.00	Set 1/4 Sec. post - Dogwood 6 N 40 E 11
	Dogwood 8 S 75 E 30		W. Oak 20 S 15 W 24
	do 6 S 20 E 5	95.12	Set post on West boundary 5.30 lbs
80.50	Sec. cor.		South of cor. - Poplar 26 N 77 W 14
North	Between Sect. 7 & 8		Hickory 10 S 67 E 12
40.00	Set 1/4 Sec. post - W. Oak 20 N 32 W 27		Surveyed by Arthur Menrie Esq.
	do 24 N 23 E 25		1811
80.00	Set post cor. of Sect. 5, 6, 7, 8		
	Poplar 10 S 40 E 22		
	W. Oak 7 N 16 E 25		
	Land Same		
East	Between Sect. 5 & 8 on random		
40.00	Set temporary 1/4 Sec. post		
80.52	Intersected N & S line 80 lbs South		
	Land Same.		